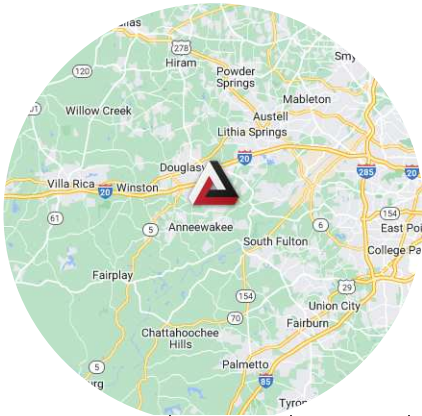




CHAPEL HILL LAND - FOR SALE



4010 Chapel Hill Rd., Douglasville GA 30135

- ▲ The property is located along heavily traveled Chapel Hill Road in a thriving retail corridor serving as one of the primary retail trade areas in Douglasville.
- ▲ Conveniently located in the Douglasville suburb of Atlanta, just minutes from both I-20 and Highway 5.
- ▲ The location has excellent visibility along Chapel Hill Road.

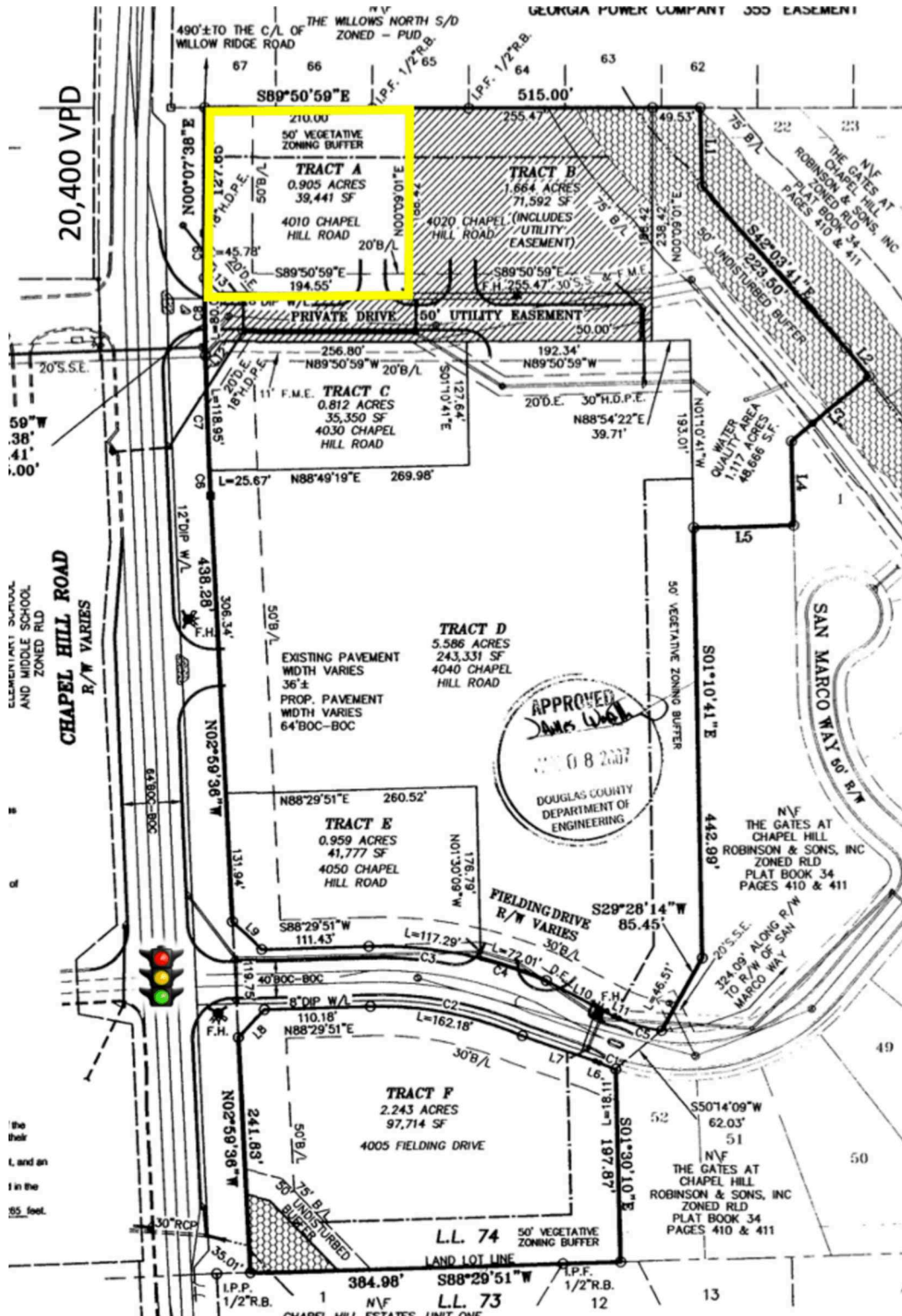
2023 Demographics	1 Mile	3 Miles	5 Miles
Population	6,781	37,177	83,535
Households	2,202	12,521	28,593
Average HH Income	\$93,005	\$93,485	\$81,460
Daytime Population	9,266	9,158	26,620
	5 min	10 min	15 min
Drivetime Population	12,471	58,760	114,863

Available Spaces

A - .9 AC

LEASING INFORMATION

Suite	Tenant	Size/SF
A	Available	.9 AC



Information contained in this marketing brochure has been obtained by the owner of the property or other sources that we deem reliable, however we cannot guarantee the accuracy of it. You should conduct an independent investigation of the shopping center to verify all information in determining the suitability of the property